



Ohio | With support from ELCA World Hunger, Holy Trinity Lutheran Church in Lexington and New Lebanon Lutheran Church in Junction City are collaborating with local partners to serve meals and provide vital resources to seniors, people living in addiction rehabilitation residences and families in rural Appalachian communities.



Bosnia and Herzegovina | Thanks to your generosity, Lutheran Disaster Response has distributed supplies to migrants traveling through southeastern Europe and ensured that they reach refugee service centers safely.



Tanzania | After joining a community microfinance group, Bishara was able to open a juice and ice cream business. Gifts to ELCA World Hunger empower women such as Bishara to generate their own incomes and support their families.



Indonesia | After fire ravaged a marketplace in North Sumatra, Indonesia, leaving many families without their main source of income, Lutheran Disaster Response helped business owners restock their shelves and rebuild their livelihoods.



Read more about your impact in “LifeLines”

ELCA World Hunger

62 countries | 40 states and territories

INTERNATIONAL

Angola
Argentina
Bangladesh
Bolivia
Brazil
Burkina Faso
Burundi
Cambodia
Cameroon
Central African Republic
Chile
Colombia
Czech Republic
Egypt
El Salvador
Ethiopia
Gambia
Ghana
Guatemala
Guinea
Haiti
Honduras
Hungary
India
Indonesia
Iraq
Japan
Jerusalem and Palestinian territories
Jordan
Kenya

Kyrgyzstan
Lebanon
Liberia
Madagascar
Malawi
Malaysia
Mexico
Mozambique
Myanmar
Namibia
Nepal
Nicaragua
Nigeria
Papua New Guinea
Peru
Romania
Russia
Rwanda
Senegal
Serbia
Sierra Leone
Slovakia
Somalia
South Africa
South Sudan
Tanzania
Thailand
Uganda
Venezuela
Vietnam
Zimbabwe

UNITED STATES AND CARIBBEAN

Alabama
Alaska
Arizona
Arkansas
California
Colorado
District of Columbia
Florida
Georgia
Illinois
Iowa
Kansas
Kentucky
Louisiana
Maine
Maryland
Massachusetts
Michigan
Minnesota
Missouri

Montana
Nebraska
New Jersey
New Mexico
New York
North Carolina
North Dakota
Ohio
Oklahoma
Oregon
Pennsylvania
Puerto Rico
South Carolina
South Dakota
Tennessee
Texas
Utah
Virginia
Washington
Wisconsin

Lutheran Disaster Response

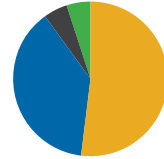
53 countries | 36 states and territories

INTERNATIONAL

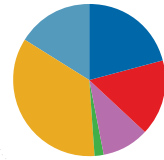
Argentina
Bangladesh
Belarus
Brazil
Burkina Faso
Cameroon
Central African Republic
Chad
Chile
Colombia
Czech Republic
Democratic Republic of the Congo
Egypt
El Salvador
Ethiopia
Germany
Ghana
Haiti
Honduras
Hungary
India
Indonesia
Iraq
Jerusalem and Palestinian territories
Kenya

Lebanon
Liberia
Madagascar
Malawi
Malaysia
Mali
Mexico
Moldova
Mozambique
Namibia
Nepal
Nigeria
Peru
Philippines
Poland
Romania
Serbia
Sierra Leone
Slovakia
South Sudan
Syria
Tanzania
Thailand
Timor Leste
Ukraine
Venezuela
Zimbabwe

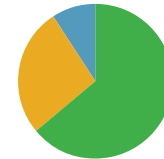
ELCA World Hunger 2024 FINANCIAL HIGHLIGHTS



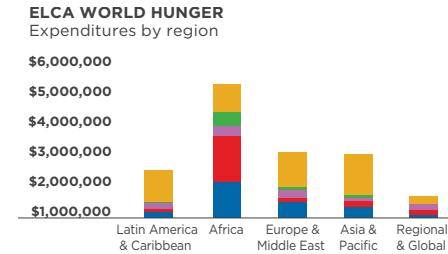
REVENUE		\$20,630,172
52%	Individuals and others	\$10,671,953
38%	Synods and congregations	\$7,811,002
5%	Endowments and other ELCA-held funds	\$1,082,847
5%	Bequests, trusts and miscellaneous	\$1,064,370



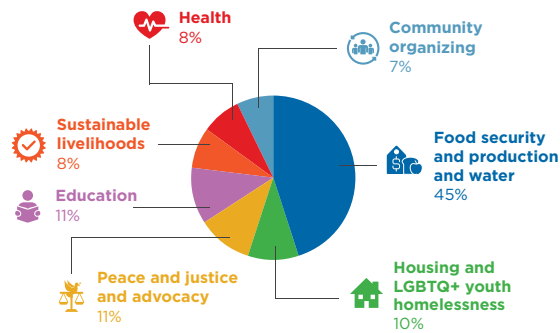
ELCA WORLD HUNGER International projects by sector	
Food, agriculture and livelihood	38%
Relief and preparedness	27%
Health	11%
Education and vocational training	11%
Peace, justice and human rights	8%
Program services	6%



EXPENDITURES		\$24,463,492
64%	International program	\$15,776,571
27%	Domestic program	\$6,548,605
Educating and networking		\$513,695
Relief and development		\$3,436,568
Advocacy		\$2,598,342
9%	General administration and fundraising	





ELCA WORLD HUNGER Domestic projects by sector



Lutheran Disaster Response 2024 FINANCIAL HIGHLIGHTS

REVENUE		\$17,494,828
BY SOURCE		
58%	Individuals and others	\$10,210,967
35%	Synods and congregations	\$6,232,369
6%	Bequests, trusts and miscellaneous	\$980,752
1%	Endowments and other ELCA-held funds	\$70,740

BY DESIGNATION		
	57%	General undesignated support \$9,895,587
	43%	Specific designated support \$7,599,241

EXPENDITURES		\$19,095,324
BY TYPE		
58%	International	\$11,157,125
36%	United States	\$6,850,110
6%	Fundraising and administration	\$1,088,089
BY FUND		
57%	Specific designated support	\$10,921,894
43%	General undesignated support	\$8,173,430

HIGHLIGHTED EXPENDITURES	
UNITED STATES	
49%	Hurricanes
11%	Tornadoes
9%	Flooding
9%	Wildfires
7%	Clean-water access, severe storms and other disasters
5%	Disaster preparedness and capacity building
3%	AMMPARO, care for migrants
7%	Operations

INTERNATIONAL	
27%	Europe (Russia-Ukraine war, access to safe education, AMMPARO, flood)
25%	Africa (Flood, drought, health, support for refugees, disaster risk reduction, food emergency)
16%	Latin America and Caribbean (Conflict, health, fire, flood, AMMPARO, disaster risk reduction, cyclone)
13%	Middle East and North Africa (Conflict in the Holy Land, earthquake, support for refugees)
9%	Asia (Flood, disaster risk reduction and preparedness, conflict, earthquake, fire)
7%	Global grants (Disaster risk reduction, gender justice, global response coordination, care for migrants)
3%	Operations

HOW TO GIVE

Online
ELCA.org/GiveWH
ELCA.org/GiveLDR

Phone
800-638-3522

Mail
Make checks payable to “ELCA World Hunger” or “Lutheran Disaster Response” and mail to:

ELCA
P.O. Box 1809
Merrifield, VA 22116-8009



Give to
ELCA World Hunger



Give to
Lutheran Disaster Response